

Aftermarket

For OEM's, Operators, Passengers and Maintenance Crews.



Drop-In Replacement

- All aftermarket products are PMA approved
- Direct competitor interchange
- Lightweight, increased payload capacity

Availability

- Shortest industry lead times
- Safety stock programs
- Complete standard product portfolio

Performance

- Zero maintenance
- Lowest industry backlash
- Backed by the longest industry warranty

Service

- Worldwide sales and service locations
- AOG support program
- Off-the-shelf availability

Enidine
7 Centre Drive
Orchard Park, New York 14127 • USA
Phone: 716-662-1900
Fax: 716-667-1385
Email: aviationsales@iit.com
www.enidine.com

UltraLOC[®] Seat Recline Systems



ENIDINE

OEM Market

UltraLOC[®] Seat Recline System
– “The Best Choice!”



Value

- Competitively priced
- Lowest cost of ownership
- Value added engineering support

Safety

- 16-g tested and approved
- Egress override feature
- High load units available for aft-facing seats

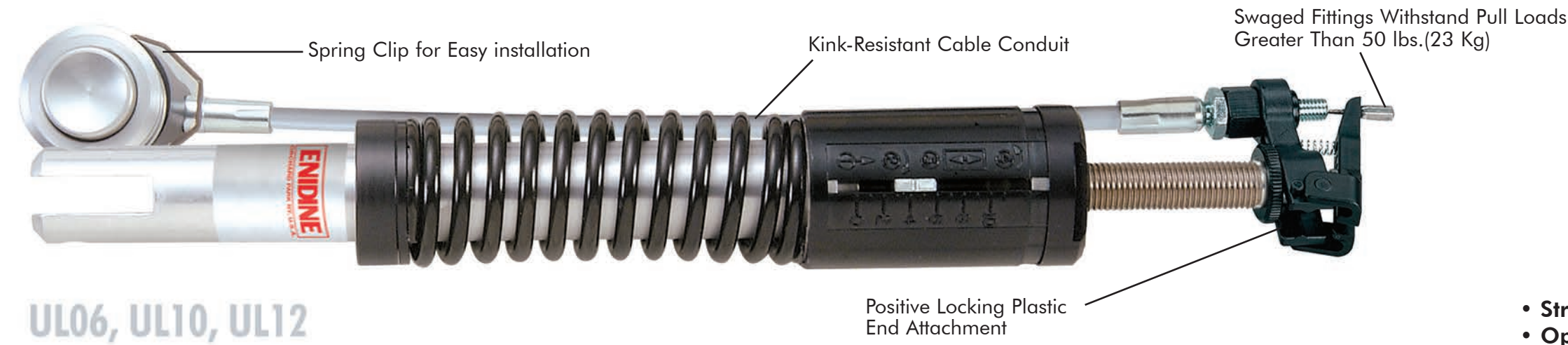
Reliable

- Longest service life expectancy
- Superior ultimate load design
- Extended warranty period

User-Friendly

- Easy-to-install – QuikLOC™ option
- Stroke adjustment without tools
- Tamperproof “lockout” feature

Economy Class UltraLOC®

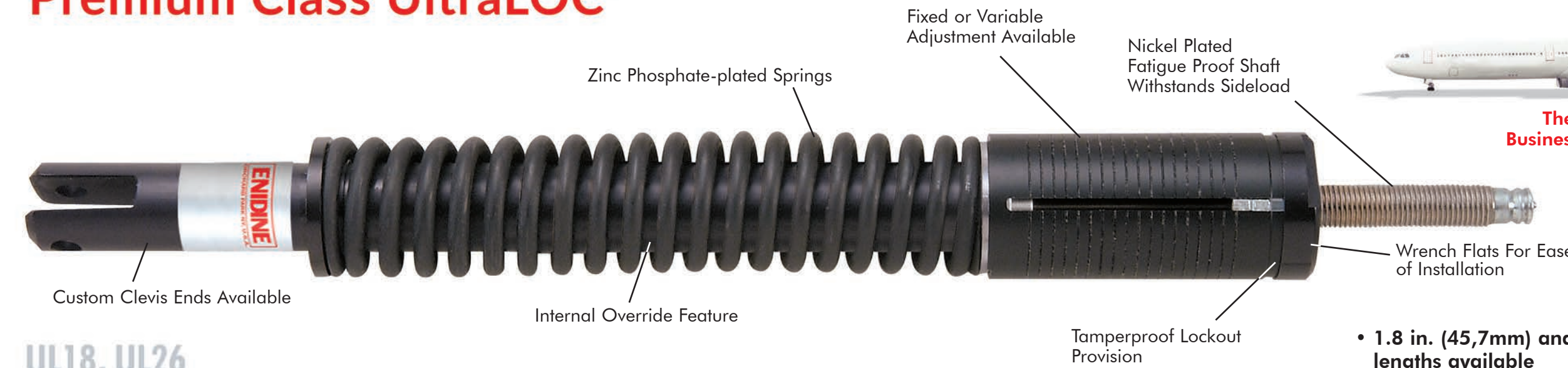


The BEST CHOICE for Economy Class seats

- Stroke lengths available up to 1.12 in. (28,5mm)
- Operational life expectancy 250,000 cycles

UL06, UL10, UL12

Premium Class UltraLOC®



The BEST CHOICE for Business and First-Class seats

- 1.8 in. (45,7mm) and 2.6 in. (66mm) stroke lengths available
- Operational life expectancy 200,000 cycles

UL18, UL26

Executive Class UltraLOC®

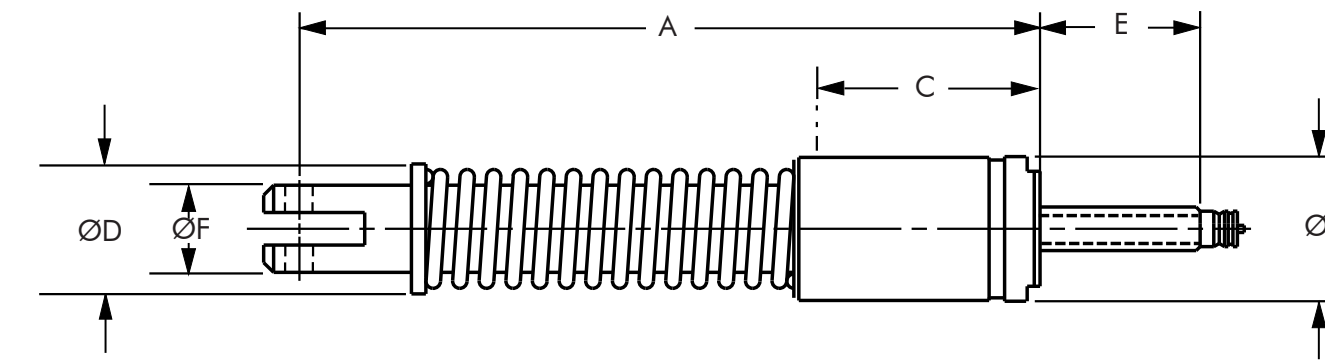


The BEST CHOICE for Executive Aircraft seats

- 3.2 in. (81,3mm) and 3.7 in. (94mm) stroke lengths available
- Operational life expectancy 50,000 cycles

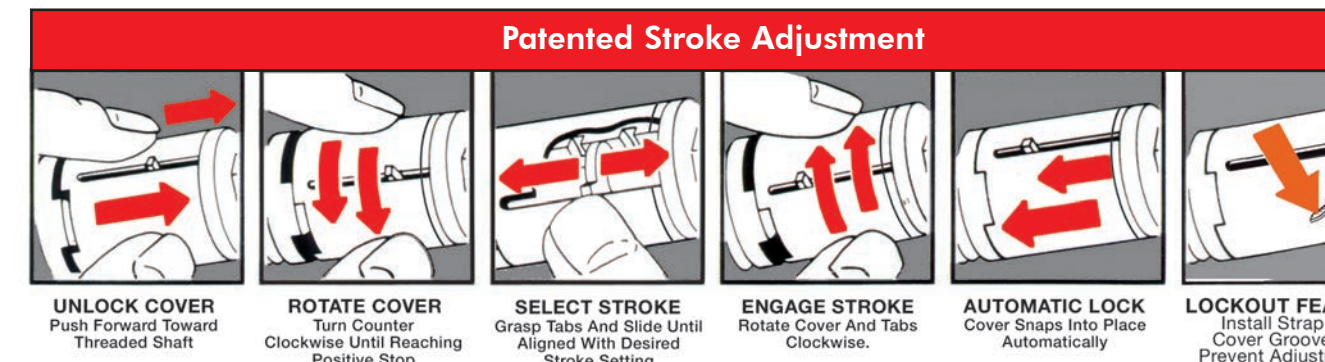
UL32, UL37

UltraLOC® Engineering Data

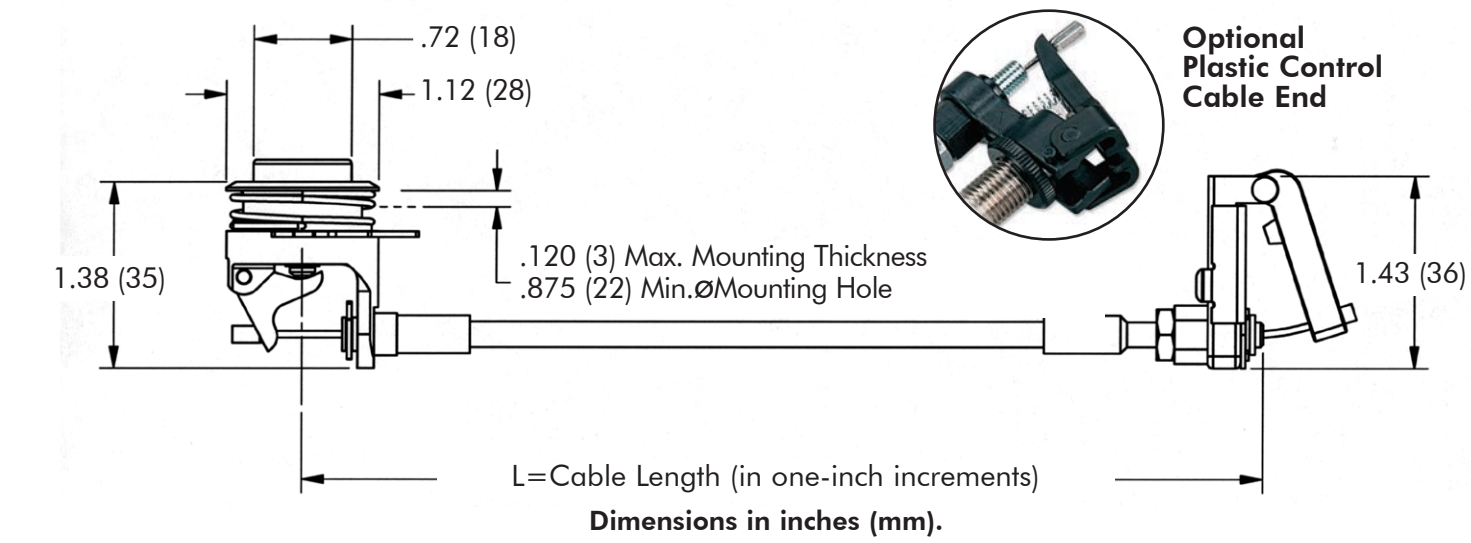


Technical Specifications*															
UltraLOC® Model	DIMENSIONS						SPRING FORCE			FORCE/LOAD					
	Minimum Extended A	Maximum Extended A	Diameter Stroke	Diameter B	Dimension C	Diameter D	Minimum Diameter E	Maximum Preload F	Minimum Preload	Maximum Endload	Override Force	Ultimate Force	Ultimate Compressive Load	Force Required to Unlock	
Economy Class															
UL06 UL10 UL12	6.38 (162,1)	12.00 (304,8)	1.25 (31,8)	1.12 (28,7)	1.13 (28,7)	1.38 (35,1)	.75 (19,1)	80 (356)	125 (556)	120 (534)	200 (890)	70 (312)	3,200 (14 240)	5,000 (22 250)	6 (27)
Premium Class															
UL18	8.40 (213,4)	14.00 (355,6)	1.25 (31,8)	1.80 (45,7)	1.13 (28,7)	1.50 (38,1)	.75 (19,1)	80 (356)	125 (556)	120 (534)	200 (890)	70 (312)	3,200 (14 240)	5,000 (22 250)	6 (27)
Executive Class															
UL32	11.90 (302,3)	-	1.47 (37,3)	3.20 (81,0)	1.47 (37,3)	1.20 (30,5)	.75 (19,1)	95 (423)	-	140 (623)	-	60 (267)	4,500 (20 025)	4,000 (17 800)	6 (27)
UL37	13.50 (342,9)	-	1.75 (44,5)	3.70 (94,5)	1.75 (44,5)	1.20 (30,5)	.75 (19,1)	145 (645)	-	220 (979)	-	60 (267)	8,000 (35 600)	5,000 (22 250)	6 (27)
RECOMMENDED TEMPERATURE RANGES															
Operating				Non-Operating				Storage							
40 to 130°F (5 to 55°C)				0 to 140°F (-18 to 60°C)				-40 to 180°F (-40 to 82°C)							

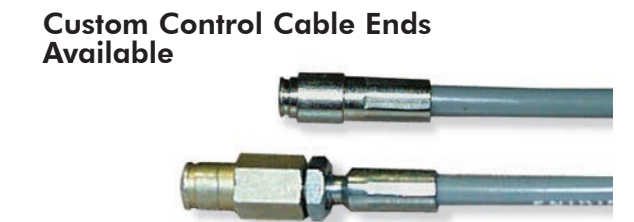
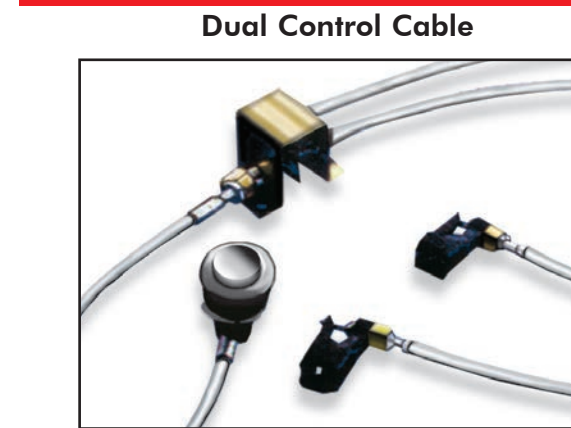
* Custom designs available to suit any application need.



Control Cables



UltraLOC® Accessories/Options



Custom Design Options Available to Suit Any Application Needs

